

Protecting our water  
from the hazards of the  
irrigation systems is important.

It is equally important  
to protect the backflow  
prevention assemblies  
that are protecting our water.

This is a brief  
instructional brochure  
to assist the homeowner  
or business person in  
winterizing your irrigation  
system without  
causing damage to the  
backflow prevention  
assembly.

**Colorado Backflow Prevention  
Association**

Visit us: [www.backflow.org](http://www.backflow.org)

Contact us: [info@backflow.org](mailto:info@backflow.org)

Or visit the  
**American Backflow Prevention  
Association**

At: [www.abpa.org](http://www.abpa.org)

This brochure provided to the people of  
**INSERT CITY NAME HERE**  
with the assistance of the

**Colorado Backflow Prevention  
Association.**

**INSERT CITY LOGO  
HERE**

© CBPA 2005

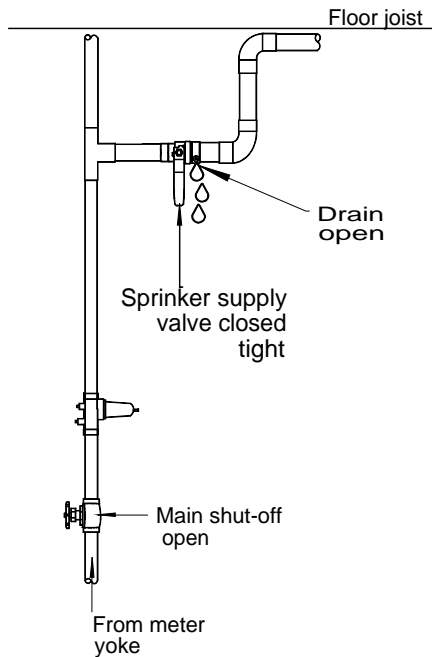


Winterizing  
Your Irrigation  
Backflow  
Prevention  
Assembly  
**Reduced Pressure  
Assembly**



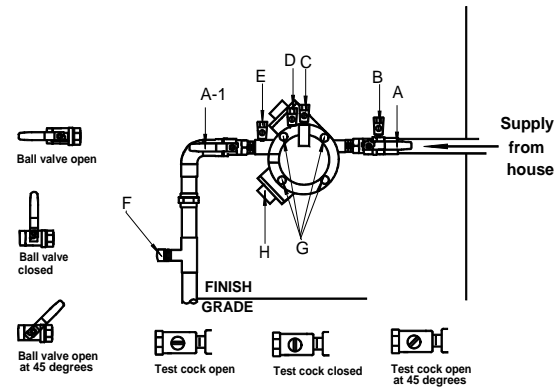
## STEP 1

### SHUT OFF WATER SUPPLY TO SPRINKERS



1. Close the sprinkler supply valve tight
2. Open the supply drain; this may be a ball valve with drain or a boiler drain.
3. Leave the main-shut-off open. Closing this valve will shut off the water to your house.

## Reduced Pressure Assembly



1. Close sprinkler supply valve tight.
2. Keep ball valves (A & A-1) open.
3. Open all test cocks (B, C, D, E).
4. Remove cap from air injection fitting (F).
5. Loosen all relief valve cover bolts (G) until water drains out. DO NOT remove cover.
6. Loosen #2 check cap (H) and allow water to drain.
7. **CLOSE BALL VALVE #2 (A-1).**
8. Attach air compressor hose to air injection fitting (F).
9. Using the sprinkler timer, run each zone on the system until only air comes out of the heads.
10. Leave inside drain and downstream air injection fitting (F) open.
11. Leave relief cover bolts (G) loosened.
12. Leave all test cocks (B, C, D, E) open to 45 degrees.
13. Leave ball valves #1 (A) and #2 (A-1) open at 45 degrees.

There are many different kinds of backflow preventers used for lawn irrigation applications. If your backflow preventer does not look like the backflow preventers shown, contact your water provider, your irrigation specialist or a backflow preventer industry professional for more information.